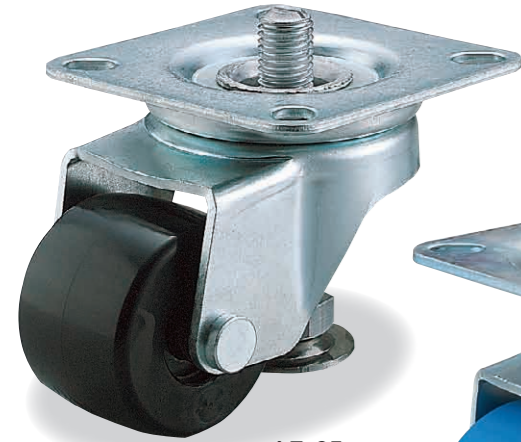
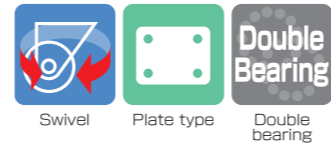


Equipped with adjuster feet SERIES

These casters are widely used for transporting machinery and equipment, appliance and furniture, etc. Articles can be easily moved and casters can be firmly fixed using the adjuster.

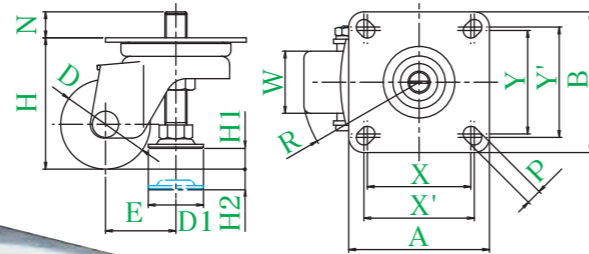
AF TYPE



AF-65



AF-75



● Description of product number

AF - 65

Wheel diameter
Equipped with adjuster feet

Bracket = Trivalent unichrome coating

Product number	Wheels	Wheel diameter	Wheel width	Mounting height	Mounting base	Mounting dimensions	Hole diameter	Eccentricity	Turning radius	Outer diameter of adjuster feet	Amount of adjustment		Allowance load	Wheel weight
		D (mm)	W (mm)	H (mm)	A × B (mm)	X × Y (X' × Y') (mm)	P (mm)	E (mm)	R (mm)	D1 (mm)	H1 (mm)	H2 (mm)	daN (kgf)	(g)
AF-50	Reinforced nylon wheel (including B)	50	45	74	102 × 102	80 × 80 (75 × 75)	11	46	73	40	15	15	250(255.0)	1190
AF-65	Reinforced nylon wheel (including B)	65	45	95	102 × 102	80 × 80 (75 × 75)	11	51	84	40	15	15	250(255.0)	1320
AF-75	MC nylon wheel (including B)	75	45	120	140 × 140	115 × 115 (105 × 105)	11.5	56	95	40	15	15	300(306.0)	2500
AF-100	MC nylon wheel (including B)	100	45	145	140 × 140	115 × 115 (105 × 105)	11.5	65	116	40	15	15	300(306.0)	2800

Wheel in use

Refer to P165 for detailed specifications.

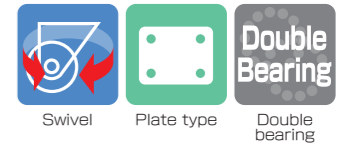


Reinforced nylon wheel (including B)

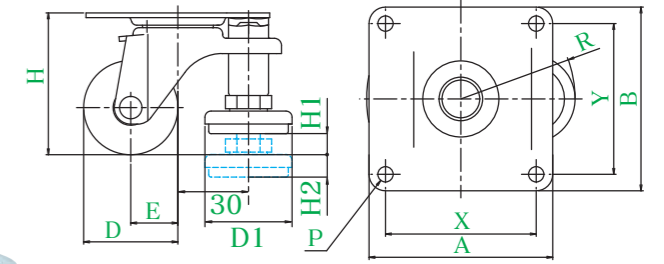


MC nylon wheel (including B)

E-AF TYPE



E-40BN-AF



● Description of product number

E - 40 BN - AF

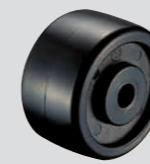
Wheel diameter
Wheel type
Equipped with adjuster feet

Bracket = Trivalent unichrome coating

Product number	Wheels	Wheel diameter	Wheel width	Mounting height	Mounting base	Mounting dimensions	Hole diameter	Eccentricity	Turning radius	Outer diameter of adjuster feet	Amount of adjustment		Allowance load	Wheel weight
		D (mm)	W (mm)	H (mm)	A × B (mm)	X × Y (mm)	P (mm)	E (mm)	R (mm)	D1 (mm)	H1 (mm)	H2 (mm)	daN (kgf)	(g)
E-40 BN -AF	Nylon wheel	40	21	60	78 × 78	64 × 64	6.5	20	49	37	9	9.5	30(30.6)	295
E-50 BN -AF	Nylon wheel	50	21	65	78 × 78	64 × 64	6.5	20	49	37	9	9.5	40(40.8)	310

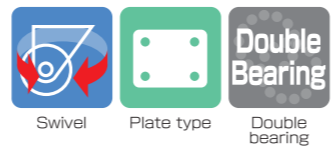
Wheel in use

Refer to P165 for detailed specifications.

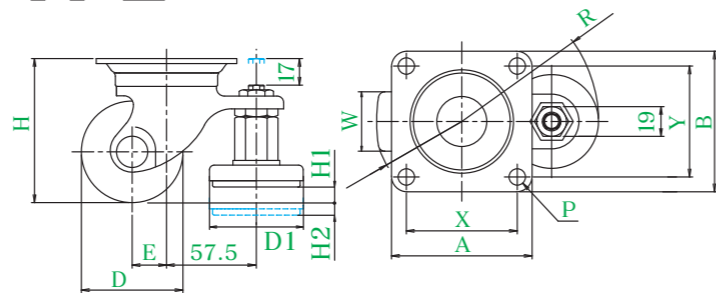


BN Nylon wheel

HG-AF TYPE



HG-65GNB-AF



● Description of product number
HG - 65 GNB - AF
 Bracket type Wheel diameter Wheel type Equipped with adjuster feet

Bracket = Trivalent unichrome coating

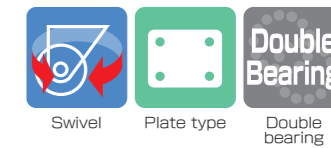
Product number	Wheels	Wheel diameter	Wheel width	Mounting height	Mounting base	Mounting dimensions	Hole diameter	Eccentricity	Turning radius	Outer diameter of adjuster feet	Amount of adjustment		Allowable load	Wheel weight
		D (mm)	W (mm)	H (mm)	A × B (mm)	X × Y (mm)	P (mm)	E (mm)	R (mm)	D1 (mm)	H1 (mm)	H2 (mm)	daN (kgf)	(g)
HG-65	PB Phenol wheel (including B)	65	38	92	90 × 90	71 × 71	10.5	22	88	60	10	8	300 (306.0)	1230
	GNB Reinforced nylon wheel (including B)													1175
	MC MC nylon wheel (including B)													1190
	MCE MC nylon wheel (including B) (conductive)													1195
HG-75	PB Phenol wheel (including B)	75	38	106	90 × 90	71 × 71	10.5	22	88	60	15	10	320 (326.4)	
	GNB Reinforced nylon wheel (including B)												1260	
	MC MC nylon wheel (including B)												1290	
	MCE MC nylon wheel (including B) (conductive)												1295	

Wheel in use Refer to P165 for detailed specifications.

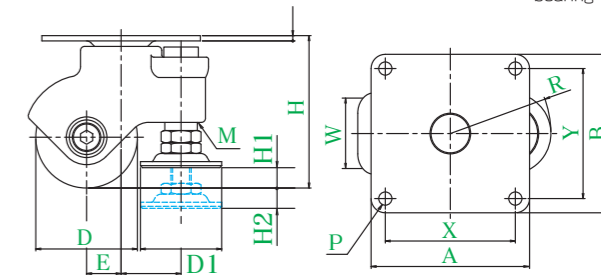


PB Phenol wheel (including B)
 GNB Reinforced nylon wheel
 MC MC nylon wheel (including B)
 MCE MC nylon wheel (including B) (conductive)

SPLG TYPE



SPLG-50BN,AJ



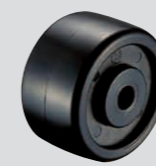
● Description of product number
SPLG - 50 BN , AJ
 Bracket type Wheel diameter Wheel type Equipped with adjuster feet

Body = Nylon
 Bracket = Trivalent unichrome coating

Product number	Wheels	Wheel diameter	Wheel width	Mounting height	Mounting base	Mounting dimensions	Hole diameter	Eccentricity	Turning radius	Outer diameter of adjuster feet	Amount of adjustment		Allowance load	Wheel weight
		D (mm)	W (mm)	H (mm)	A × B (mm)	X × Y (mm)	P (mm)	E (mm)	R (mm)	D1 (mm)	H1 (mm)	H2 (mm)	daN (kgf)	(g)
SPLG-50	BN ,AJ Nylon wheel	50	28	75	78 × 78	64 × 64	6.5	17	50	40	10	10	60(61.2)	390
SPLG-65	BN ,AJ Nylon wheel	65	25	93	92 × 92	75 × 75	8.5	27	66	40	10	20	60(61.2)	515
SPLG-75	BN ,AJ Nylon wheel	75		98	92 × 92	75 × 75	8.5	27	66	40	15	15	60(61.2)	525

☆ Utility Model No.3141203 Design No.1337711

Wheel in use Refer to P165 for detailed specifications.



BN Nylon wheel