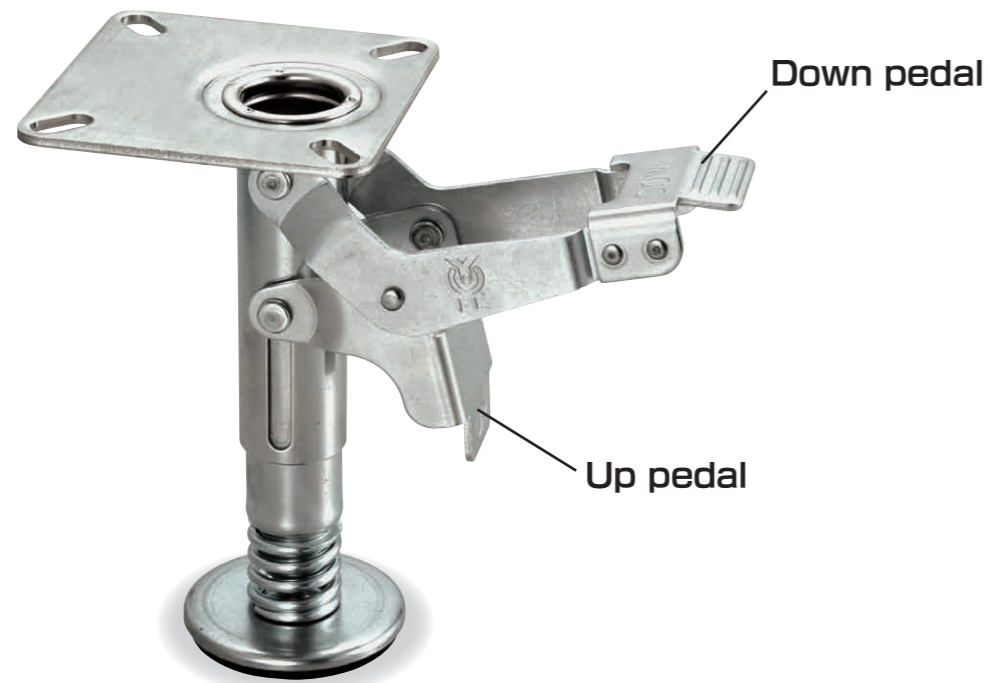


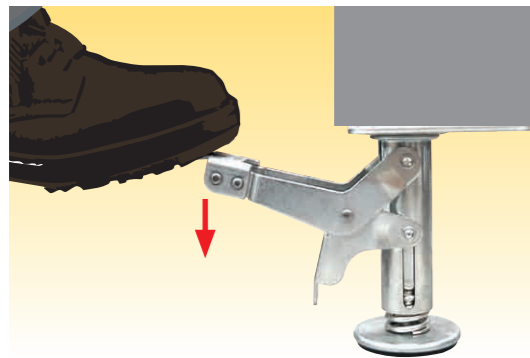
Truck is securely locked with easy one-touch operation!

Easy lock!!



How to use the easy lock

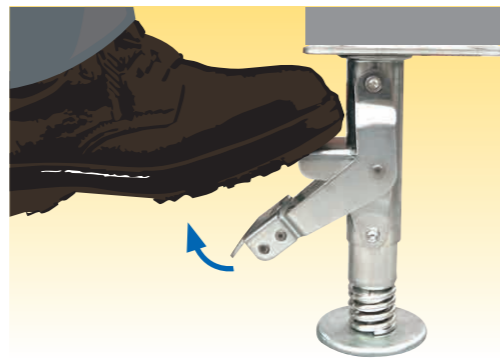
Locking method



Step on the DOWN pedal to the end. When the DOWN pedal is stepped, the UP pedal is set at the top position and the truck is locked.

☆ Patent Pending No.2012-001039

Releasing method



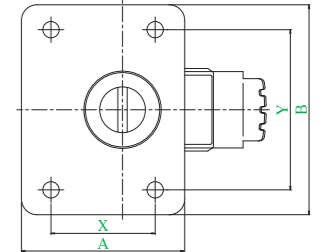
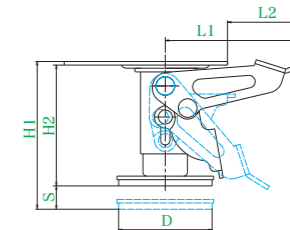
When the Up pedal that went up by locking the truck was stepped, the DOWN pedal goes up. When the DOWN pedal is set at the top position and the truck is locked, release your foot from the pedal slowly. By doing so, the lock can be safely released.

Precautions for using the easy lock

1. Use the easy lock in such a manner that optimum mounting height is observed. (*The mounting height of rubber wheel varies depending on load.)
2. This is the stopper for the truck equipped with casters. Since this lock is not designed for being lifted, do not use this lock as a jack. (Load is supported by casters.)
3. Mount the easy lock in such a manner that the pedal protrudes.
4. The easy lock is not designed to be used on an inclined plane. Please use the easy lock on flat ground.
5. Do not use the easy lock for a working table or step ladder.
6. Do not apply load to the carrier in which the easy lock is locked from the side.
7. Do not place the carrier in which the easy lock is locked on the truck and transfer.

ELOCK_{TYPE}

Small



● Description of product number

ELOCK - 75

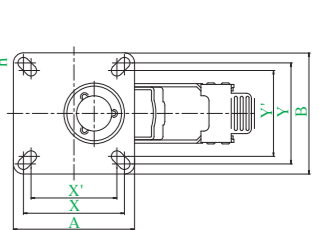
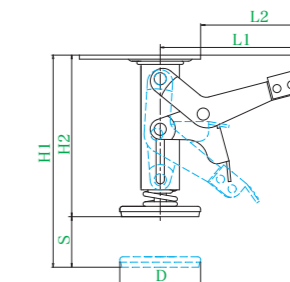
Conforming wheel diameter
Bracket type

Supported product: ELOCK-65 to 75 support S series plate type (φ 65 and φ 75).

Product number		Appropriate mounting height										
	D (mm)		H1 (mm)	H2 (mm)		S (mm)	A × B (mm)					
ELOCK-65	60	85	90	75	15	105 × 135	67 × 103	10.5	93	53	-1.25	
ELOCK-75	60	90	95	80	15	105 × 135	67 × 103	10.5	93	53	-1.25	

ELOCK_{TYPE}

Industrial



● Description of product number

ELOCK - 200

Conforming wheel diameter
Bracket type

Supported product: ELOCK-100 (H130) supports S series plate type (φ 100). ELOCK-100 to 200 supports J series plate type (φ 100 to φ 200).

Product number		Appropriate mounting height										
	D (mm)		H1 (mm)	H2 (mm)		S (mm)	A × B (mm)					
ELOCK-100 (H130)	75	130	135	115	20	120 × 120	100 × 100 (85 × 85)	11	127	87	-1.65	
ELOCK-100	78	144	150	132	18	120 × 120	100 × 100 (85 × 85)	11	143	103	-10	1230
ELOCK-150	78	198	210	160	50	120 × 120	100 × 100 (85 × 85)	11	156	115	14	1400
ELOCK-200	78	250	258	208	50	120 × 120	100 × 100 (85 × 85)	11	156	115	14	1450