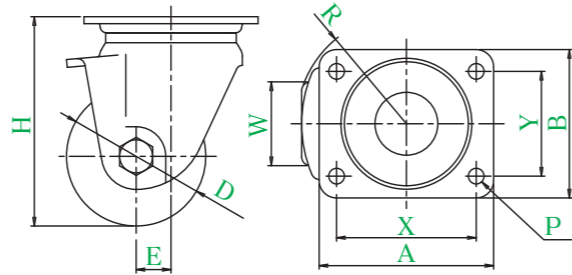
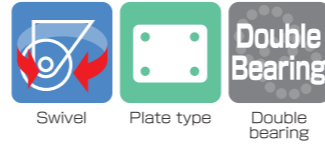


UHGTYPE



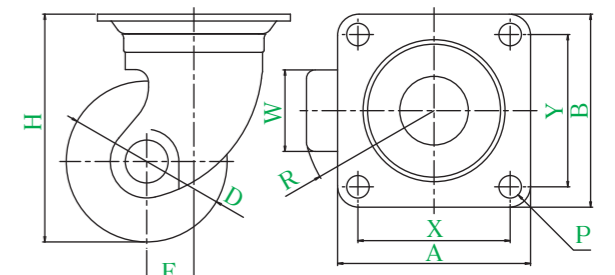
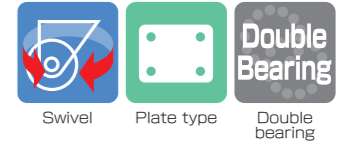
UHG-80MC

● Description of product number

UHG - 80 MC

Bracket type
Wheel diameter
Wheel type

HGTYPE



HG-65PB

● Description of product number

HG - 65 PB

Bracket type
Wheel diameter
Wheel type

Bracket = Trivalent unichrome coating

Product number	Wheels	Wheel diameter	Wheel width	Mounting height	Mounting base	Mounting dimensions	Hole diameter	Eccentricity	Turning radius	Allowance load	Wheel weight
		D(mm)	W(mm)	H(mm)	A × B(mm)	X × Y(mm)	P(mm)	E(mm)	R(mm)	daN(kgf)	(g)
UHG-50	PB Phenol wheel (including B)	50	38	79	84 × 84	64 × 64	8.5	12	47	400(408.0)	815
	GFB Reinforced nylon wheel (including B)									300(306.0)	825
	MC MC nylon wheel (including B)									400(408.0)	810
	MCE MC nylon wheel (including B) (conductive)									400(408.0)	815
UHG-65	PB Phenol wheel (including B)	65	48	97	100 × 100	78 × 78	10.5	14	54	500(510.0)	1470
	GFB Reinforced nylon wheel (including B)									400(408.0)	1585
	MC MC nylon wheel (including B)									600(612.0)	1565
	MCE MC nylon wheel (including B) (conductive)									600(612.0)	1575
UHG-75	PB Phenol wheel (including B)	75	48	107	100 × 100	78 × 78	10.5	14	54	600(612.0)	1670
	GFB Reinforced nylon wheel (including B)									500(510.0)	1560
	MC MC nylon wheel (including B)									700(714.0)	1655
	MCE MC nylon wheel (including B) (conductive)									700(714.0)	1660
UHG-80	MC MC nylon wheel (including B)	80	48	120	100 × 85	80 × 60	9.0	20	63	800(816.0)	1695
UHG-100	MC MC nylon wheel (including B)	100	48	140	150 × 110	121 × 59	13.0	20	72	800(816.0)	2145

● Color of MC nylon wheel (including B) having a wheel diameter of φ 80 and φ 100 is dark blue.

☆ Design No.1251349

Wheel in use Refer to P158 for detailed specifications.



PB Phenol wheel (including B)
GFB Reinforced nylon wheel (including B)
MC MC nylon wheel (including B)
MCE MC nylon wheel (including B) (conductive)

Bracket = Trivalent unichrome coating

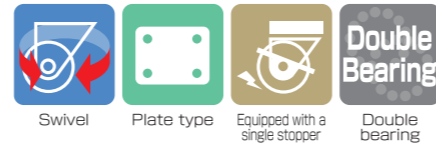
Product number	Wheels	Wheel diameter	Wheel width	Mounting height	Mounting base	Mounting dimensions	Hole diameter	Eccentricity	Turning radius	Allowance load	Wheel weight
		D(mm)	W(mm)	H(mm)	A × B(mm)	X × Y(mm)	P(mm)	E(mm)	R(mm)	daN(kgf)	(g)
HG-50	GNB Reinforced nylon wheel	50	28	68	64 × 64	50 × 50	6.5	25	51	160(163.2)	320
HG-50GNB (P54 × 36)	70 × 54				54 × 36	160(163.2)				310	
HG-50	MC MC nylon wheel	50	25	68	64 × 64	50 × 50	6.5	25	51	160(163.2)	325
HG-50	MCE MC nylon wheel (conductive)				160(163.2)	325					
HG-65	PB Phenol wheel (including B)	65	38	92	90 × 90	71 × 71	10.5	22	57	300(306.0)	915
	GNB Reinforced nylon wheel (including B)									300(306.0)	865
	MC MC nylon wheel (including B)									300(306.0)	880
	MCE MC nylon wheel (including B) (conductive)									300(306.0)	880
HG-75	PB Phenol wheel (including B)	75	38	106	90 × 90	71 × 71	10.5	22	61	320(326.4)	1005
	GNB Reinforced nylon wheel (including B)									320(326.4)	930
	MC MC nylon wheel (including B)									320(326.4)	925
	MCE MC nylon wheel (including B) (conductive)									320(326.4)	965

Wheel in use Refer to P159 for detailed specifications.



PB Phenol wheel (including B)
GNB Reinforced nylon wheel
GNB Reinforced nylon wheel (including B)
MC MC nylon wheel (including B)
MCE MC nylon wheel (including B) (conductive)

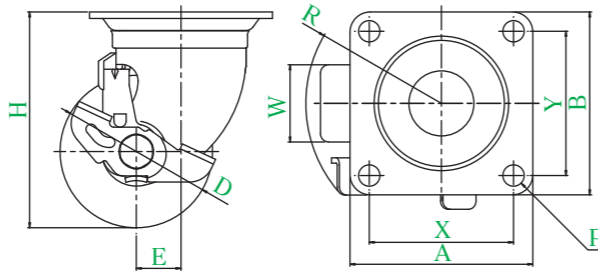
HG-S TYPE



• Equipped with a pedal type single stopper



HG-65PBS

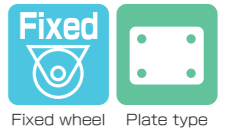


● Description of product number

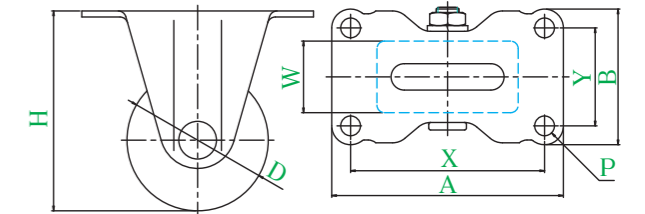
HG - 65 PB S

Bracket type
Wheel diameter
Wheel type
Equipped with stopper

HR TYPE



HR-75PB



● Description of product number

HR - 75 PB

Bracket type
Wheel diameter
Wheel type

Bracket = Trivalent unichrome coating

Product number	Wheels	Wheel diameter	Wheel width	Mounting height	Mounting base	Mounting dimensions	Hole diameter	Eccentricity	Turning radius	Allowance load	Wheel weight
		D(mm)	W(mm)	H(mm)	A × B(mm)	X × Y(mm)	P(mm)	E(mm)	R(mm)	daN(kgf)	(g)
HG-50	GNB S Reinforced nylon wheel	50	28	68	64 × 64	50 × 50	6.5	25	65	160(163.2)	365
HG-50GNBS (P54 × 36)	70 × 54		54 × 36		160(163.2)	355					
HG-50	MC S MC nylon wheel	50	25	68	64 × 64	50 × 50	6.5	25	65	160(163.2)	360
HG-50	MCE S MC nylon wheel (conductive)									160(163.2)	360
HG-65	PB S Phenol wheel (including B)	65	38	92	90 × 90	71 × 71	10.5	22	67	300(306.0)	905
HG-65	GNB S Reinforced nylon wheel (including B)									300(306.0)	920
HG-65	MC S MC nylon wheel (including B)	65	38	92	90 × 90	71 × 71	10.5	22	67	300(306.0)	945
HG-65	MCE S MC nylon wheel (including B) (conductive)									300(306.0)	945
HG-75	PB S Phenol wheel (including B)	75	38	106	90 × 90	71 × 71	10.5	22	67	320(326.4)	935
HG-75	GNB S Reinforced nylon wheel (including B)									320(326.4)	1005
HG-75	MC S MC nylon wheel (including B)	75	38	106	90 × 90	71 × 71	10.5	22	67	320(326.4)	1035
HG-75	MCE S MC nylon wheel (including B) (conductive)									320(326.4)	1035

● These casters are used for only locking rotation of the wheel.

☆ Patent Pending No.2006-117215 Design No.1240347

Wheel in use Refer to P159 for detailed specifications.



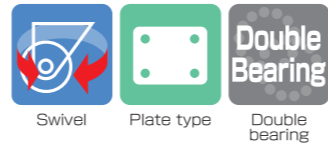
Bracket = Trivalent unichrome coating

Product number	Wheels	Wheel diameter	Wheel width	Mounting height	Mounting base	Mounting dimensions	Hole diameter	Allowance load	Wheel weight
		D(mm)	W(mm)	H(mm)	A × B(mm)	X × Y(mm)	P(mm)	daN(kgf)	(g)
HR-50	GNB Reinforced nylon wheel	50	28	68	80 × 50	66 × 36	6.5	160(163.2)	195
	MC MC nylon wheel		25					160(163.2)	200
	MCE MC nylon wheel (conductive)		25					160(163.2)	200
HR-65	PB Phenol wheel (including B)	65	38	92	111 × 67	91 × 47	10.5	300(306.0)	630
	GNB Reinforced nylon wheel (including B)							300(306.0)	575
	MC MC nylon wheel (including B)							300(306.0)	595
HR-75	MCE MC nylon wheel (including B) (conductive)	75	38	106	123 × 72	103 × 52	10.5	300(306.0)	595
	PB Phenol wheel (including B)							320(326.4)	730
	GNB Reinforced nylon wheel (including B)							320(326.4)	665
HR-75	MC MC nylon wheel (including B)	75	38	106	123 × 72	103 × 52	10.5	320(326.4)	700
	MCE MC nylon wheel (including B) (conductive)							320(326.4)	700

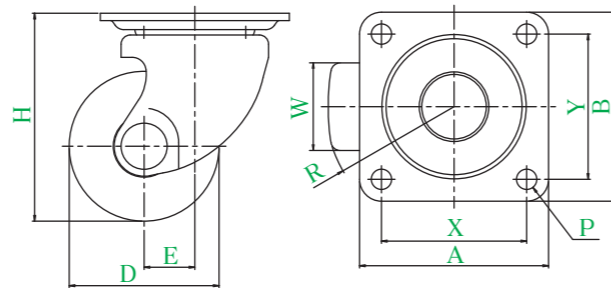
Wheel in use Refer to P159 for detailed specifications.



HSG TYPE

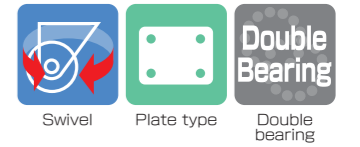


HSG-65GNB

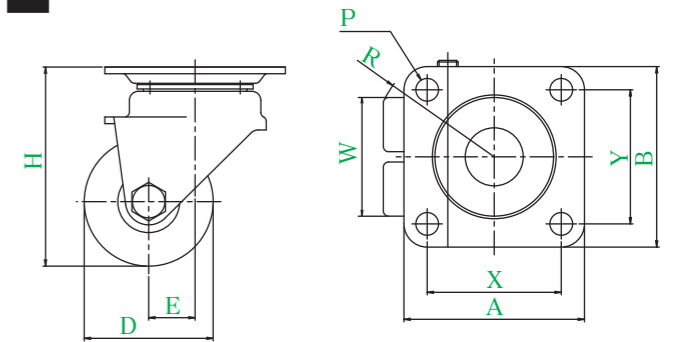


● Description of product number
HSG - 65 GFB
 Bracket type Wheel diameter Wheel type

HG-W TYPE



HG-50BN-W



● Description of product number
HG - 50 BN-W
 Bracket type Wheel diameter Wheel type

Bracket = Trivalent unichrome coating

Product number	Wheels	Wheel diameter	Wheel width	Mounting height	Mounting base	Mounting dimensions	Hole diameter	Eccentricity	Turning radius	Allowance load	Wheel weight
		D(mm)	W(mm)	H(mm)	A × B(mm)	X × Y(mm)	P(mm)	E(mm)	R(mm)	daN(kgf)	(g)
HSG-50	PB Phenol wheel (including B)	50	38	79	82 × 82	63 × 63	8.8	22	49	300(306.0)	740
	GFB Reinforced nylon wheel (including B)									300(306.0)	710
	MC MC nylon wheel (including B)									300(306.0)	730
	MCE MC nylon wheel (including B) (conductive)									300(306.0)	735
HSG-65	PB Phenol wheel (including B)	65	38	90	82 × 82	63 × 63	8.8	22	57	300(306.0)	790
	GNB Reinforced nylon wheel (including B)									300(306.0)	750
	MC MC nylon wheel (including B)									300(306.0)	765
	MCE MC nylon wheel (including B) (conductive)									300(306.0)	770
HSG-75	PB Phenol wheel (including B)	75	38	100	82 × 82	63 × 63	8.8	22	61	300(306.0)	880
	GNB Reinforced nylon wheel (including B)									300(306.0)	825
	MC MC nylon wheel (including B)									300(306.0)	850
	MCE MC nylon wheel (including B) (conductive)									300(306.0)	855

Bracket = Trivalent unichrome coating

Product number	Wheels	Wheel diameter	Wheel width	Mounting height	Mounting base	Mounting dimensions	Hole diameter	Eccentricity	Turning radius	Allowance load	Wheel weight
		D(mm)	W(mm)	H(mm)	A × B(mm)	X × Y(mm)	P(mm)	E(mm)	R(mm)	daN(kgf)	(g)
HG-38	BN -W Nylon wheel	38	46	64	70 × 70	52 × 52	8.8	18	44	120(122.4)	375
HG-50	BN -W Nylon wheel	50	46	77	70 × 70	52 × 52	8.8	18	49	150(153.0)	425

Wheel in use Refer to P159 for detailed specifications.



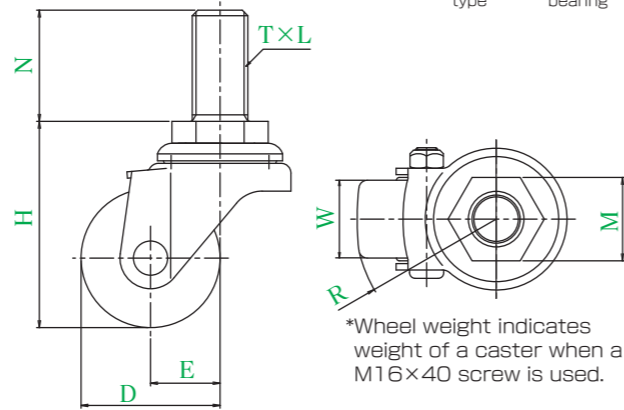
Wheel in use Refer to P159 for detailed specifications.



HT TYPE



HT-65GNB, M16 x 40



*Wheel weight indicates weight of a caster when a M16x40 screw is used.

● Description of product number
Please specify screw type and length.

HT - 65 GNB , M16 x 40

Bracket type	Wheel diameter	Wheel type	Screw	Length
--------------	----------------	------------	-------	--------

Bracket = Trivalent unichrome coating

Product number	Wheels	Wheel diameter	Wheel width	Mounting height	Screw	Pitch	Length	Opposite side	Eccentricity	Turning radius	Allowance load	Wheel weight	
		D(mm)	W(mm)	H(mm)	T	L	N(mm)	M(mm)	E(mm)	R(mm)	daN(kgf)	(g)	
HT-50	GNB Reinforced nylon wheel	50	28	74				M16 = 23 M20 = 30	25	51	100(102.0)	340	
	MC MC nylon wheel (including B)		25								100(102.0)	345	
	MCE MC nylon wheel (including B) (conductive)										100(102.0)	350	
HT-65	PB Phenol wheel (including B)	65	38	93	M16	2	40	30	22	57	150(153.0)	790	
	GNB Reinforced nylon wheel (including B)											150(153.0)	735
	MC MC nylon wheel (including B)											150(153.0)	755
HT-75	MCE MC nylon wheel (including B) (conductive)	75	38	107	M20	2.5	80	30	22	61	150(153.0)	760	
	PB Phenol wheel (including B)											160(163.2)	880
	GNB Reinforced nylon wheel (including B)											160(163.2)	805
HT-75	MC MC nylon wheel (including B)	75	38	107				30	22	67	160(163.2)	820	
	MCE MC nylon wheel (including B) (conductive)											160(163.2)	820
	PB Phenol wheel (including B)											160(163.2)	825

● Allowable load is the allowable load when the stem is screwed in to the end.
★ Refer to P7 for the mounting method.

Wheel in use

Refer to P159 for detailed specifications.



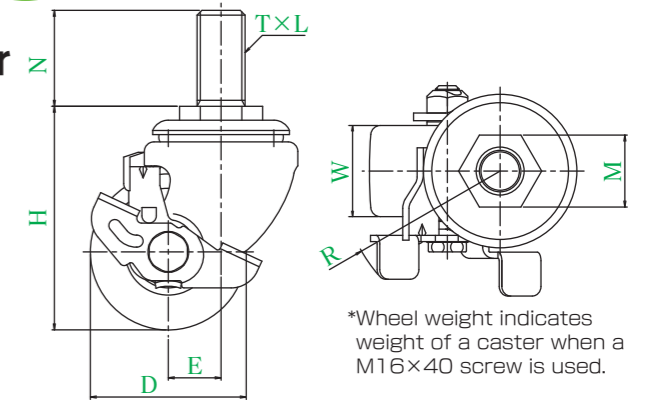
HT-S TYPE



• Equipped with a pedal type single stopper



HT-75MCS, M16 x 40



*Wheel weight indicates weight of a caster when a M16x40 screw is used.

● Description of product number
Please specify screw type and length.

HT - 75 MC S , M16 x 40

Bracket type	Wheel diameter	Wheel type	Equipped with stopper	Screw	Length
--------------	----------------	------------	-----------------------	-------	--------

Bracket = Trivalent unichrome coating

Product number	Wheels	Wheel diameter	Wheel width	Mounting height	Screw	Pitch	Length	Opposite side	Eccentricity	Turning radius	Allowance load	Wheel weight	
		D(mm)	W(mm)	H(mm)	T	L	N(mm)	M(mm)	E(mm)	R(mm)	daN(kgf)	(g)	
HT-50	GNB S Reinforced nylon wheel	50	28	74				M16 = 23 M20 = 30	25	65	100(102.0)	385	
	MC S MC nylon wheel (including B)		25								100(102.0)	380	
	MCE S MC nylon wheel (including B) (conductive)										100(102.0)	385	
HT-65	PB S Phenol wheel (including B)	65	38	93	M16	2	40	30	22	67	150(153.0)	845	
	GNB S Reinforced nylon wheel (including B)											150(153.0)	800
	MC S MC nylon wheel (including B)											150(153.0)	820
HT-75	MCE S MC nylon wheel (including B) (conductive)	75	38	107	M20	2.5	80	30	22	67	150(153.0)	820	
	PB S Phenol wheel (including B)											160(163.2)	950
	GNB S Reinforced nylon wheel (including B)											160(163.2)	875
HT-75	MC S MC nylon wheel (including B)	75	38	107				30	22	67	160(163.2)	910	
	MCE S MC nylon wheel (including B) (conductive)											160(163.2)	915
	PB S Phenol wheel (including B)											160(163.2)	915

● These casters are used for only locking rotation of the wheel.
● Allowable load is the allowable load when the stem is screwed in to the end.
★ Refer to P7 for the mounting method.

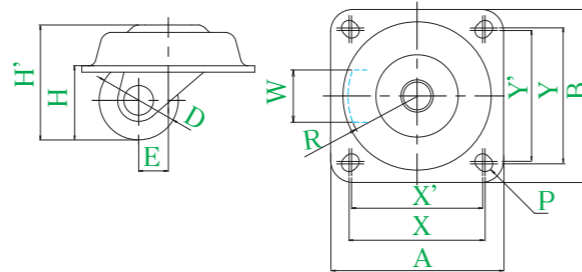
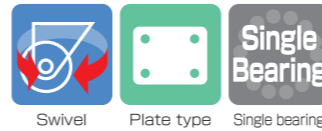
☆ Patent Pending No.2006-117215

Wheel in use

Refer to P159 for detailed specifications.



HGL TYPE



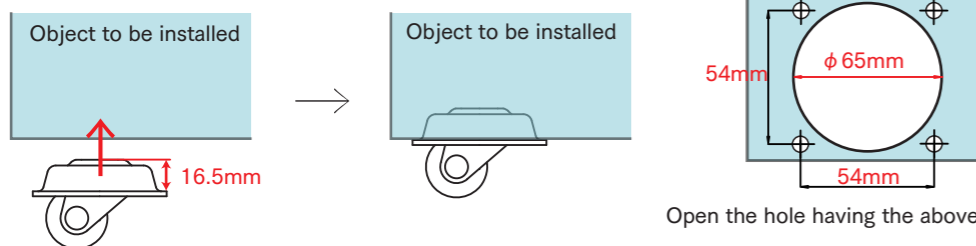
HGL-32GNB

● Description of product number
HGL - 32 GNB
 Bracket type Wheel diameter Wheel type

Bracket = Trivalent unichrome coating

Product number	Wheels											
		D(mm)	W(mm)	H(mm)	H'(mm)	A × B(mm)	X × Y (X' × Y') (mm)	P(mm)	E(mm)	R(mm)	daN(kgf)	(g)
HGL-32 GNB	Reinforced nylon wheel	32	21	30	46.5	70 × 70	55 × 55 (53 × 53)	6.2	12	29	120 (122.4)	225

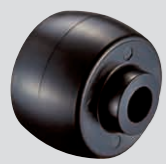
Installation diagram



Open the hole having the above dimensions.

Install a caster in such a manner that the caster is embedded in the product.
 Dimensions of the portion in which the caster is embedded is as follows: Height: 16.5mm or higher, Hole diameter: φ65mm

Wheel in use Refer to P158 for detailed specifications.



GNB Reinforced nylon wheel

Ultra low profile heavy duty casters

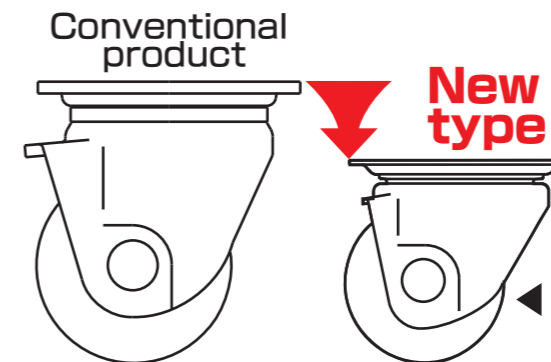
Features of CAL-H SERIES

Suitable for server racks!!



Point 1 Realizing ultra low profile without sacrificing load!!

The height is lowered for approximately 10% at maximum compared with conventional low profile type. Since the height is low, space is saved.



Conventional low profile type is further evolved!!
 The height is lowered for approximately **10%!**

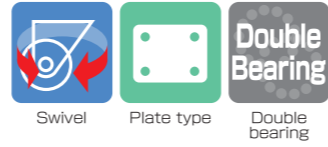
Ultra low profile Caster for heavy load CAL-H series

Point 2 Turning performance is greatly improved!!

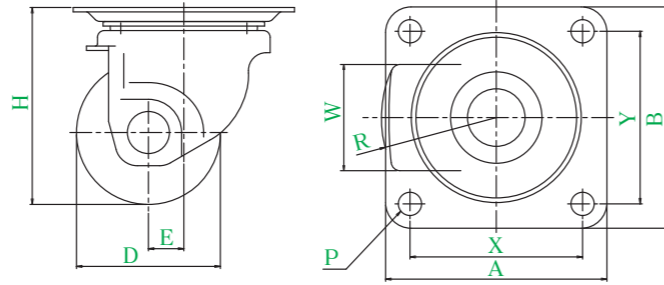
Turn starting force is reduced for **40% at the maximum.** (compared to our company's products)
 Due to smooth operation, fatigue is reduced and operability improved.



CAL-UHGTYPE



CAL-UHG-65MC



● Description of product number
CAL-UHG - 65 MC

Bracket type
Wheel diameter
Wheel type

Bracket = Trivalent unichrome coating

Product number	Wheels	Wheel diameter	Wheel width	Mounting height	Mounting base	Mounting dimensions	Hole diameter	Eccentricity	Turning radius	Allowance load	Wheel weight
		D(mm)	W(mm)	H(mm)	A × B(mm)	X × Y(mm)	P(mm)	E(mm)	R(mm)	daN(kgf)	(g)
CAL-UHG-50	PB Phenol wheel (including B)	50	38	74	84 × 84	64 × 64	8.5	14	42	400(408.0)	585
	GFB Reinforced nylon wheel (including B)									300(306.0)	590
	MC MC nylon wheel (including B)									400(408.0)	580
	MCE MC nylon wheel (including B) (conductive)									400(408.0)	585
CAL-UHG-65	PB Phenol wheel (including B)	65	48	89	100 × 100	78 × 78	10.5	16	52	500(510.0)	1065
	GFB Reinforced nylon wheel (including B)									400(408.0)	950
	MC MC nylon wheel (including B)									600(612.0)	1045
	MCE MC nylon wheel (including B) (conductive)									600(612.0)	1050
CAL-UHG-75	PB Phenol wheel (including B)	75	48	99	100 × 100	78 × 78	10.5	16	57	600(612.0)	1135
	GFB Reinforced nylon wheel (including B)									500(510.0)	1015
	MC MC nylon wheel (including B)									700(714.0)	1080
	MCE MC nylon wheel (including B) (conductive)									700(714.0)	1120

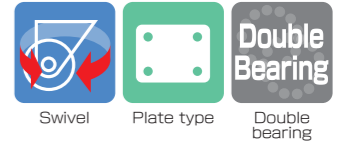
Wheel in use

Refer to P160 for detailed specifications.

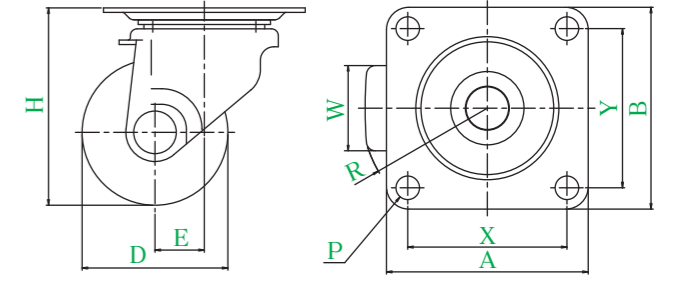


PB Phenol wheel (including B)
GFB Reinforced nylon wheel (including B)
MC MC nylon wheel (including B)
MCE MC nylon wheel (including B) (conductive)

CAL-HGTYPE



CAL-HG-65PB



● Description of product number
CAL-HG - 65 PB

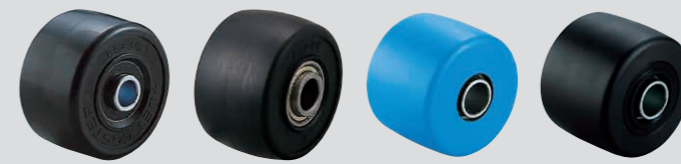
Bracket type
Wheel diameter
Wheel type

Bracket = Trivalent unichrome coating

Product number	Wheels	Wheel diameter	Wheel width	Mounting height	Mounting base	Mounting dimensions	Hole diameter	Eccentricity	Turning radius	Allowance load	Wheel weight
		D(mm)	W(mm)	H(mm)	A × B(mm)	X × Y(mm)	P(mm)	E(mm)	R(mm)	daN(kgf)	(g)
CAL-HG-65	PB Phenol wheel (including B)	65	38	88	90 × 90	71 × 71	10.5	22	57	300(306.0)	695
	GNB Reinforced nylon wheel (including B)									300(306.0)	655
	MC MC nylon wheel (including B)									300(306.0)	675
	MCE MC nylon wheel (including B) (conductive)									300(306.0)	680
CAL-HG-75	PB Phenol wheel (including B)	75	38	98	90 × 90	71 × 71	10.5	22	61	300(306.0)	760
	GNB Reinforced nylon wheel (including B)									300(306.0)	700
	MC MC nylon wheel (including B)									300(306.0)	730
	MCE MC nylon wheel (including B) (conductive)									300(306.0)	735

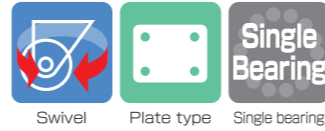
Wheel in use

Refer to P160 for detailed specifications.

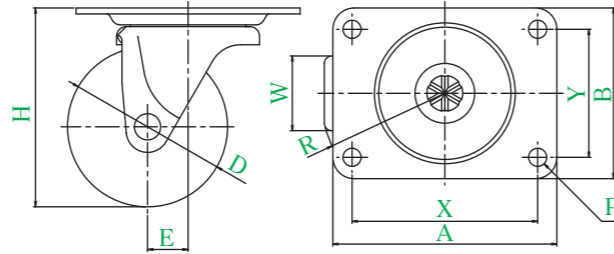


PB Phenol wheel (including B)
GNB Reinforced nylon wheel (including B)
MC MC nylon wheel (including B)
MCE MC nylon wheel (including B) (conductive)

MG TYPE



MG-75N



● Description of product number
MG - 75 N
 Bracket type
 Wheel diameter
 Wheel type

Bracket = Trivalent unichrome coating

Product number	Wheels										
		Wheel diameter D(mm)	Wheel width W(mm)	Mounting height H(mm)	Mounting base A × B(mm)	Mounting dimensions X × Y(mm)	Hole diameter P(mm)	Eccentricity E(mm)	Turning radius R(mm)	Allowance load daN(kgf)	Wheel weight (g)
MG-65 N	Nylon wheel	65	28	82	95 × 70	76 × 44	8.5	22	55	90(91.8)	380
MG-75 N	Nylon wheel	75	35	93	105 × 80	87 × 60	8.5	19	59	100(102.0)	480

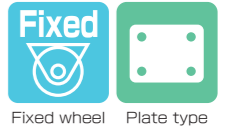
Wheel in use

Refer to P160 for detailed specifications.

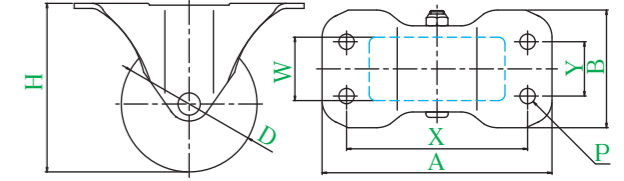


N Nylon wheel

MR TYPE



MR-75N



● Description of product number
MR - 75 N
 Bracket type
 Wheel diameter
 Wheel type

Bracket = Trivalent unichrome coating

Product number	Wheels								
		Wheel diameter D(mm)	Wheel width W(mm)	Mounting height H(mm)	Mounting base A × B(mm)	Mounting dimensions X × Y(mm)	Hole diameter P(mm)	Allowance load daN(kgf)	Wheel weight (g)
MR-65 N	Nylon wheel	65	28	82	113 × 59	89 × 28	8.5	90(91.8)	300
MR-75 N	Nylon wheel	75	35	93	127 × 65	100 × 30	8.5	100(102.0)	405

Wheel in use

Refer to P160 for detailed specifications.



N Nylon wheel